

# Friends of Fort Greene Park Counter-Proposal

Preserve / restore  
grove of trees

Preserve / enhance  
tree canopy around the circle

Enhance the Circular Garden

Preserve and restore  
A.E. Bye mounds

Upgrade playground  
equipment

Renovate and upgrade  
the public restrooms

Repair / upgrade children's  
water sprinkler

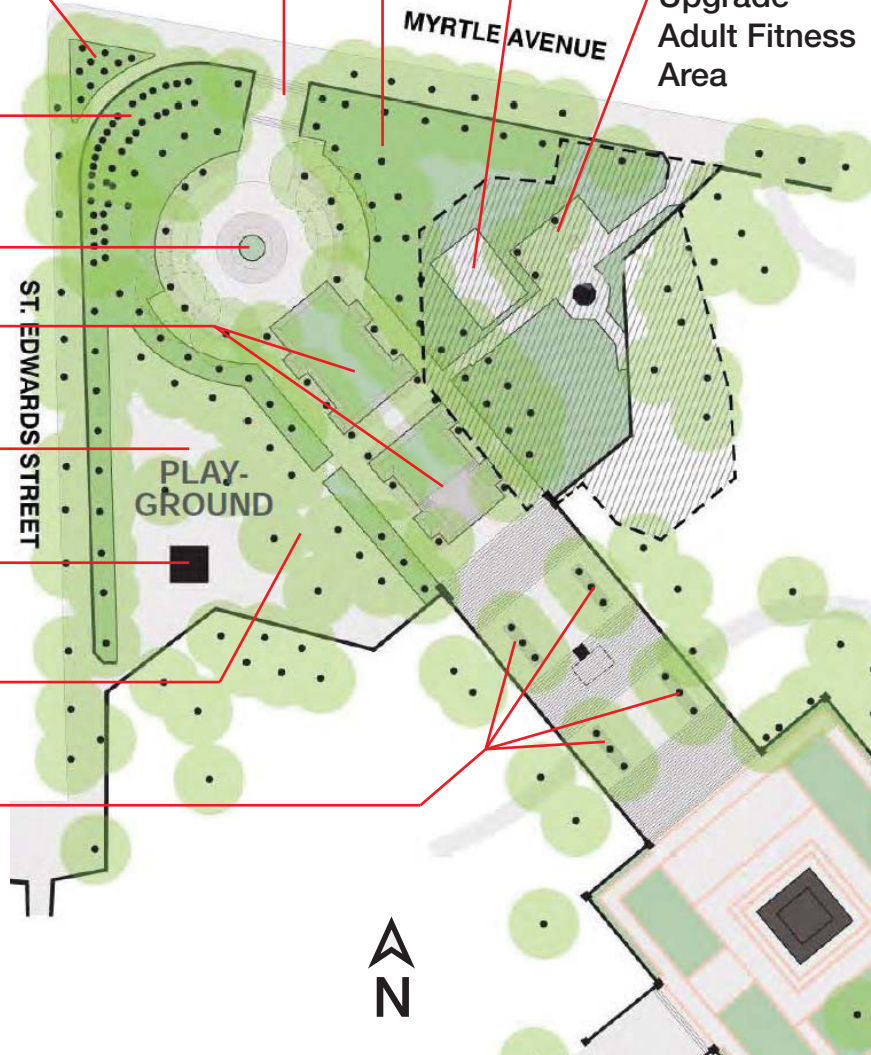
Enhance Tree pits

Add ADA Compliant ramp  
to existing stairs

Improve BBQ facilities

Repave and upgrade  
basketball court

Upgrade  
Adult Fitness  
Area



## Goals

Preserve extant layers of Ft. Greene Park's diverse historic landscape

Upgrade park stairs, paths, seating and paving for ADA compliance

Repair / improve deteriorated park infrastructure

Upgrade sustainability features for a more resilient park landscape

Maintain / enhance historic tree canopy and park vegetation

Minimize paving and fencing / emphasize green space

Maintain neighborhood scale of park

(Please continue to page 2.)

# Implementation

## Restore historic landscape features

- repair masonry walls
- restore landscape mounds
- rebuild circular plaza
- restore hierarchy of historically appropriate benches

## Implement ADA compliance

- Install accessible ramps at stairs, providing equal access for all
- Install accessible granite block paving at benches

## Upgrade drainage infrastructure for erosion control and sustainability

- maintain / repair masonry perimeter retaining wall
- rebuild paths to control runoff
- reduce plaza width to minimize site runoff
- maintain / enhance granite block paving to absorb runoff
- maintain / enhance site plantings as rain gardens to absorb runoff

## Retain / enhance historic tree canopy

- retain historic varieties of tree species
- replace trees as needed for risk management and tree health
- selectively prune mature trees

## Preserve historic paving materials / reduce concrete hardscape

- minimize paving at circular plaza by expanding planting circle
- retain historic and unique pink granite block paving at park perimeter
- reduce extent of concrete paving at barbecue areas
- expand tree pits / enhance herbaceous ground cover and permeable granite block paving
- no fencing at tree pits**
- reduce extraneous / non-historic decorative paving
- no Jet Mist granite banding**
- no tinted concrete pavers**

## Preserve neighborhood scale of park

- retain or minimize width of plaza and park paths